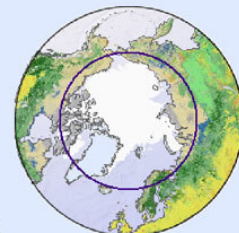


# Reykjavik - Upernavik 2013

Svalbard

Canada



Qaanaaq  
Pituffik  
(Thule Air Base)

National Park

Bylot Island  
Aug 5



Tasiilaq

July 31 Upernavik

Nerlerit Inaat  
(Constable Point)  
Ittoqqortoormiit

Canada

Qeqertarsuaq  
Aasiaat  
Kangerlussuaq

Alternate route,  
depending on wind  
& ice conditons  
Arctic Circle

Qaqortoq - Upernavik  
925 M = 6 - 12 d

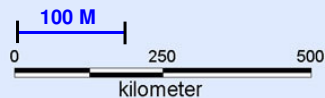
Sisimiut  
Maniitsoq  
Nuuk

June 23 Reykjavik

Reykjavik - Qaqortoq  
820 M = 5 - 10 d

- Town
- ✈ Airport
- ⊕ Heliport
- ⊕ International flight

- Inland ice / Glacier
- Ice free land above 200 m
- Ice free land 0-200 m
- Other countries



Copyright Kort og Matrikelstyrelsen (G09-2004)



Fiskenaes

Faamiut  
Littuut  
Qaqortoq  
Narsarsuaq  
Narsaq  
Nanortalik

Copenhagen

Prince Christian Sound Passage



Cape Farewell